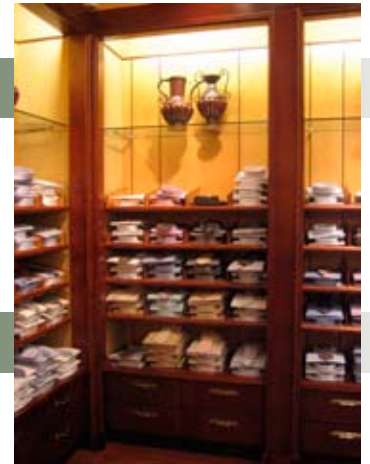


## Project

### The Nemaocolin Collection

*Uniontown, PA*

Built as part of the revitalization of downtown Uniontown, as well as to appeal to the guests of Nemaocolin Woodlands, these retail stores carry the high-end labels associated with Paris, Boca, and New York City in a small town, boutique style atmosphere.



## Team

Owner: Nemaocolin Woodlands Resort & Spa  
 Designer: Joseph Bennardo, BCD Design

## Craftsmanship



Because retail stores change inventory and vendors so often with the change of seasons, the stores were designed to be very flexible. A specially designed wall system allows for completely adjustable glass shelving, shirt and tie racks, and hanging hardware.



The time frame for this prestigious project was around seven weeks from the date the project was awarded to the final install date. To add to the difficulty, there were no architectural drawings for the project. Giffin Interior worked extensively with the designer for the first two weeks, taking his drawings straight to the shop for fabrication.

Retail

There are three separate specialty stores in one building: Exquisite, the women's clothing store, Solemates, the women's shoe store, and Top Hat, the men's clothing store. Each has its own distinct feel, with Exquisite and Top Hat done in clear-coated and dark stained maple respectively, and Solemates in plastic laminate.

## Customer Satisfaction

"We have received nothing but rave reviews about the store, the Giffin Interior team did a great job."

Matt Delman, Nemaocolin Woodlands Resort & Spa -